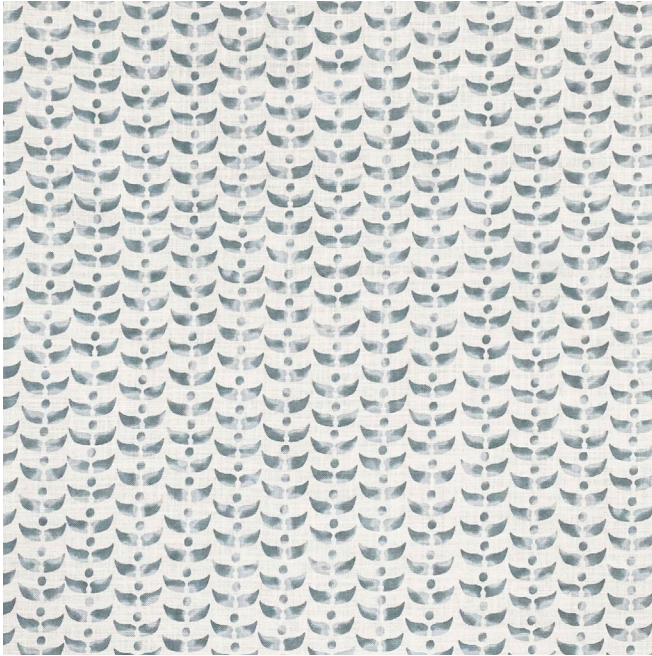


ELISHA ALEXINA

TEXTILES

HARLOW IN JADE



This pattern has a repeat, and the pigment within each motif flows differently each yard.

SPECIFICATIONS

Pattern: Harlow

Colorway: Jade

SKU: H170A

Design Width: 50.5"

Full Fabric Width: 56"

Horizontal Repeat: 8"

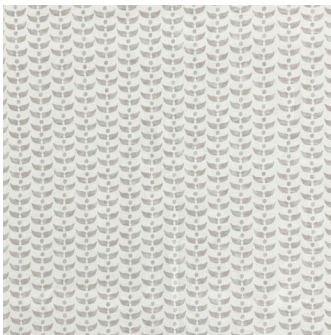
Vertical Repeat: 4"

Content: 100% Belgian Linen

ABOUT THE DESIGN

Always inspired by nature, Elisha Alexina created this small hand drawn pattern to resemble a whale's tail. The colors within each shape blend organically to create a soft, calming feeling.

OTHER COLORWAYS



NATURAL