

# ELLISHA ALEXINA

TEXTILES

## FARLA IN MAHONIA



This pattern has a repeat, and the pigment within each motif flows differently each yard.

## SPECIFICATIONS

**Pattern:** Farla

**Colorway:** Mahonia

**SKU:** F102A

**Design Width:** 54"

**Full Fabric Width:** 56"

**Horizontal Repeat:** 2.75"

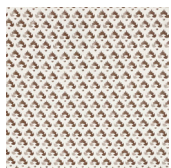
**Vertical Repeat:** 2.75"

**Content:** 100% Belgian Linen

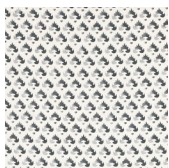
## ABOUT THE DESIGN

Embroidered Turkish textiles of the 17th century inspired Ellisha Alexina on developing this pattern. Farla, one of our most versatile fabrics, uses bold color on a neutral background and incorporates a twill-like repeating pattern.

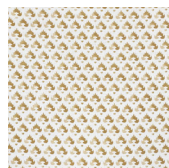
## OTHER COLORWAYS



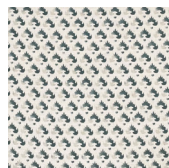
DESERT RED



INDIGO



SAFFLOWER  
ROOT



JADE



INDIGOFERA